



Oldham
Council

Delegated Decision

Adoption of Highways – Development at Acorn Street, Lees, Oldham – Spindle Mews

Report of: Deputy Chief Executive – People and Place

Officer contact: Alison Dolan, Senior Technical Admin
Ext. 4333

25 March 2019

Reason for Decision

To obtain approval for the adoption of highways as Highway Authority and to identify the likely associated revenue costs to the Council.

Executive Summary

The schedule lists the highways to become adopted as maintainable at the public expense.

Recommendation

It is recommended that the highways listed in Schedule 1 of this report be adopted as highways maintainable at public expense.

Adoption of Highways – Development at Acorn Street, Lees, Oldham – Spindle Mews

1 Background

1.1 This report is the conclusion of the process by which a private developer constructs highways for maintenance at the public expense for the benefit of the development.

2 Current Position

2.1 The highways in Schedule 1, described below and indicated on the attached location plan, have been constructed in accordance with the approved specification for highways to be adopted.

3 Schedule 1

3.1 Development at Acorn Street, Lees, Oldham.

Spindle Mews	From the existing adopted highway at Acorn Street and continuing in a generally northerly direction to a point 17 metres from the aforementioned junction and continuing in (1) a westerly direction for a distance of 43 metres to its cul-de-sac end with an associated turning head of 8 metres and (2) continuing in an easterly direction for a distance of 15 metres to its cul-de-sac end fronting No 16 Spindle Mews. Area = 744 m ²
--------------	--

4 Actions Proposed

4.1 The following action is proposed:

to adopt, on behalf of the Council as Highway Authority, the highways specified in Schedule 1 above as highways maintainable at public expense, effective immediately.

5 Options/Alternatives

5.1 Option 1: To approve the recommendation.

5.2 Option 2: Not to approve the recommendation.

6 Preferred Option

6.1 The preferred option to approve is Option 1.

7 **Financial Implications**

Revenue Implications

7.1 This proposal will increase annual maintenance costs as follows

Item	Annual Cost £	Funded from Cost Centre
1. Adopting 744 sq m of Highway @ £0.70/sq m	521	40350 (Highways Operations)
2. 5 No. additional lighting columns (@ £90/column)	450	40400 (Street Lighting)
Total	971	

7.2 If there are in year budget pressures within the above areas, the Directorate will have to manage its resources to ensure that there is no adverse variance at the year end.

Capital Implications

7.3 There are no capital implications contained within this proposal.

(Sadrul Alam/Nigel Howard)

8 **Legal Services Comments**

8.1 None. (A Evans)

9 **Co-operative Agenda**

9.1 There are no Co-operative issues or opportunities arising and the proposals are in line with the Council's Ethical Framework.

10 **Human Resources Comments**

10.1 None.

11 **Risk Assessments**

11.1 None.

12 **IT Implications**

12.1 None.

13 **Property Implications**

13.1 None.

14 **Procurement Implications**

14.1 None.

15 **Environmental and Health & Safety Implications**

15.1 In adopting the highway, the Local Authority is taking on responsibility for maintaining it in a safe condition.

16 **Equality, community cohesion and crime implications**

16.1 By adopting this highway, public rights of access will be safeguarded.

17 **Equality Impact Assessment Completed?**

17.1 No.

18 **Key Decision**

18.1 No.

18 **Key Decision Reference**

18.1 Not applicable.

19 **Background Papers**

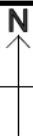
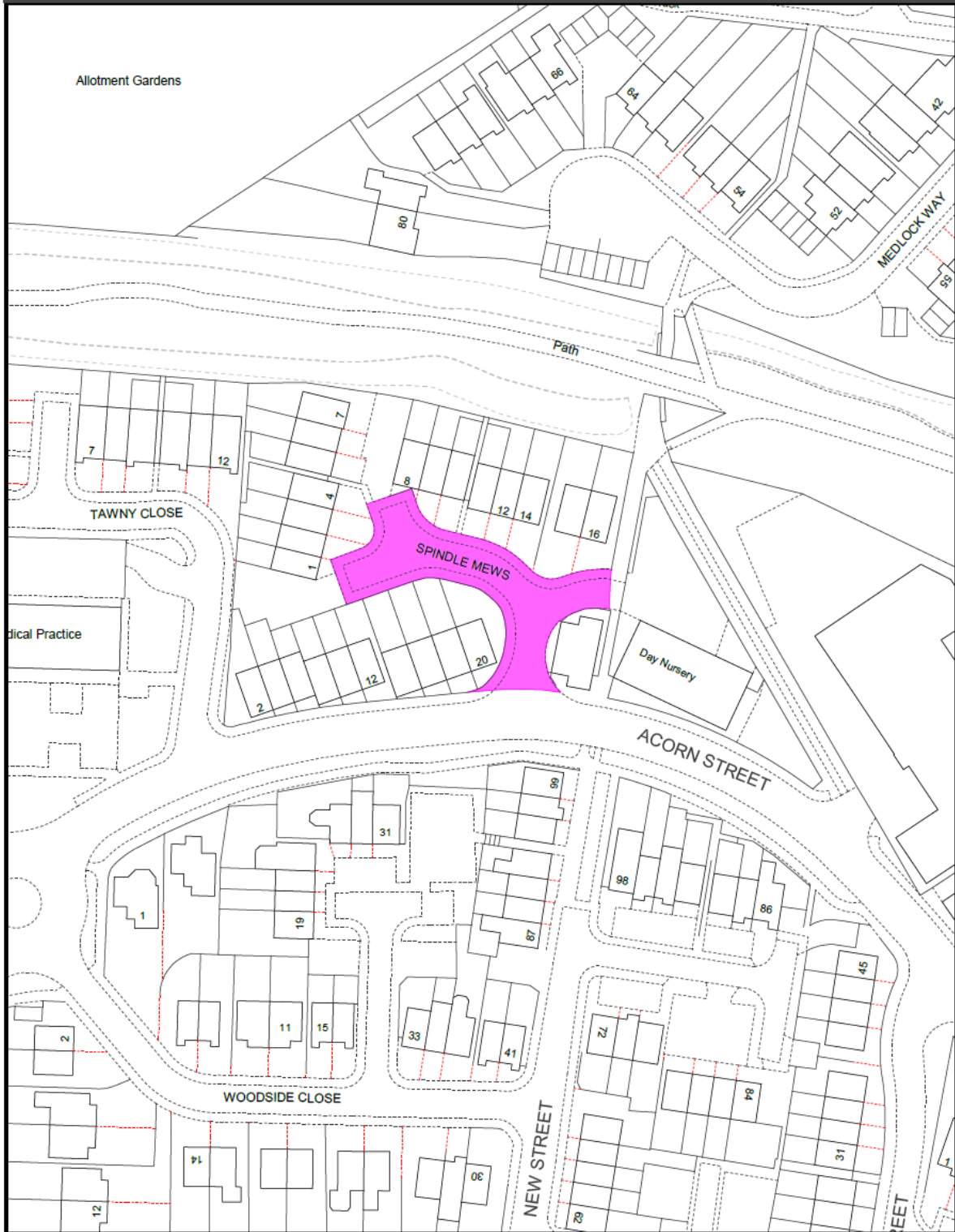
19.1 The following is a list of background papers on which this report is based in accordance with the requirements of Section 100(1) of the Local Government Act 1972. It does not include documents which would disclose exempt or confidential information as defined by the Act :

None.

APPROVAL

Decision maker Signed  Cabinet Member, Neighbourhood Services	Dated: 28/03/19
In consultation with Signed  Director of Environmental Services	Dated: 26/03/19

ADOPTABLE HIGHWAY AT SPINDLE MEWS



Production Date: 7th March 2019
Scale 1:1000 when printed at A4
© Crown copyright and database rights 2019
Ordnance Survey licence 0100019668

